



REMT

Runner Electric Motor Technology

www.runnermotors.cn

PRODUCT CATALOGUE

ALUMINIUM
THREE-PHASE
MOTORS



TABLE OF CONTENT

General information	01
Performance	02
Spare parts	03
IM B3 H71-160 Dimensions	04
IM B5 H80-160 Dimensions	05
IM B14 H63-132 Dimensions	06
IM B34 H71-132 Dimensions	07
Important notes	08

GENERAL INFORMATION

Standard and Tailor-made

Runner Electric three-phase motors are available in both standard and customized versions. Runner Electric has a strong track record in tailoring electric motors to match OEM customer needs for various applications.

Regulation compliance

Runner's motors comply with the requirements of the latest International Standards: IEC60034, IEC60038, IEC60072 and IEC60085.

Operating parameters

Standard Runner Electric motors are designed with following parameters:

- Ambient temperatures from -10 °C to 40 °C
- Installation attitudes at altitudes up to 1000 metres
- Continuous duty S1
- Three-phase 220-480V, 50/60Hz power supply

Bearing and lubrication

Standard design motors come with ball bearings with permanent lubrication.

IEC Frame Size	Bearing size	
	Drive end	Non-drive end
63M	6201	6201
71M	6202	6202
80M	6204	6204
90S/L	6205	6205
100L	6206	6206
112M	6306/6206	6306/6206
132S/M	6308/6208	6308/6208
160M/L	6309/6209	6309/6209

Insulation and temperature rise

Standard Runner Electric motors have NEMA thermal class 155 (class F insulation) and are intended to be used for 40°C ambient temperature with thermal class 130 (class B temperature rise).

Degrees of protection

The degree of enclosure protection for standard three-phase motors is IP55 in accordance of IEC60034-5. Higher degrees of protection are available on request.

Connection

Star connection Y and Delta connection Δ are available. More voltage options are available.

50Hz	60Hz	Version
230V Δ / 400V Y	460V Y	Standard
400V Δ / 690V Y	460V Δ	Standard
500V Y		On request
500V Δ		On request

Terminal box position

Terminal box in standard design is located on top. Other terminal box positions (right or left) are available on request.

Thermal protection

If required, PTC thermistor protection can be added (with 1 or 3 semiconductor temperature detectors installed in the stator winding). Other types of thermal protection are available on request.

Materials

Aluminium alloy is used for standard three-phase motors' housing, endshields and terminal box. Sheet steel is used for fan cover.

Paint finish

Standard Runner Electric three-phase electric motors are painted with an E coat (a black finish). Special paint finish and other colours are possible on request.

Efficiency

The efficiency level of Runner Electric standard three-phase motors is IE3. IE4 is available on request.

PERFORMANCE

Aluminium alloy, three-phase, IE3, 2 poles, IP55, class F insulation, class B temperature rise

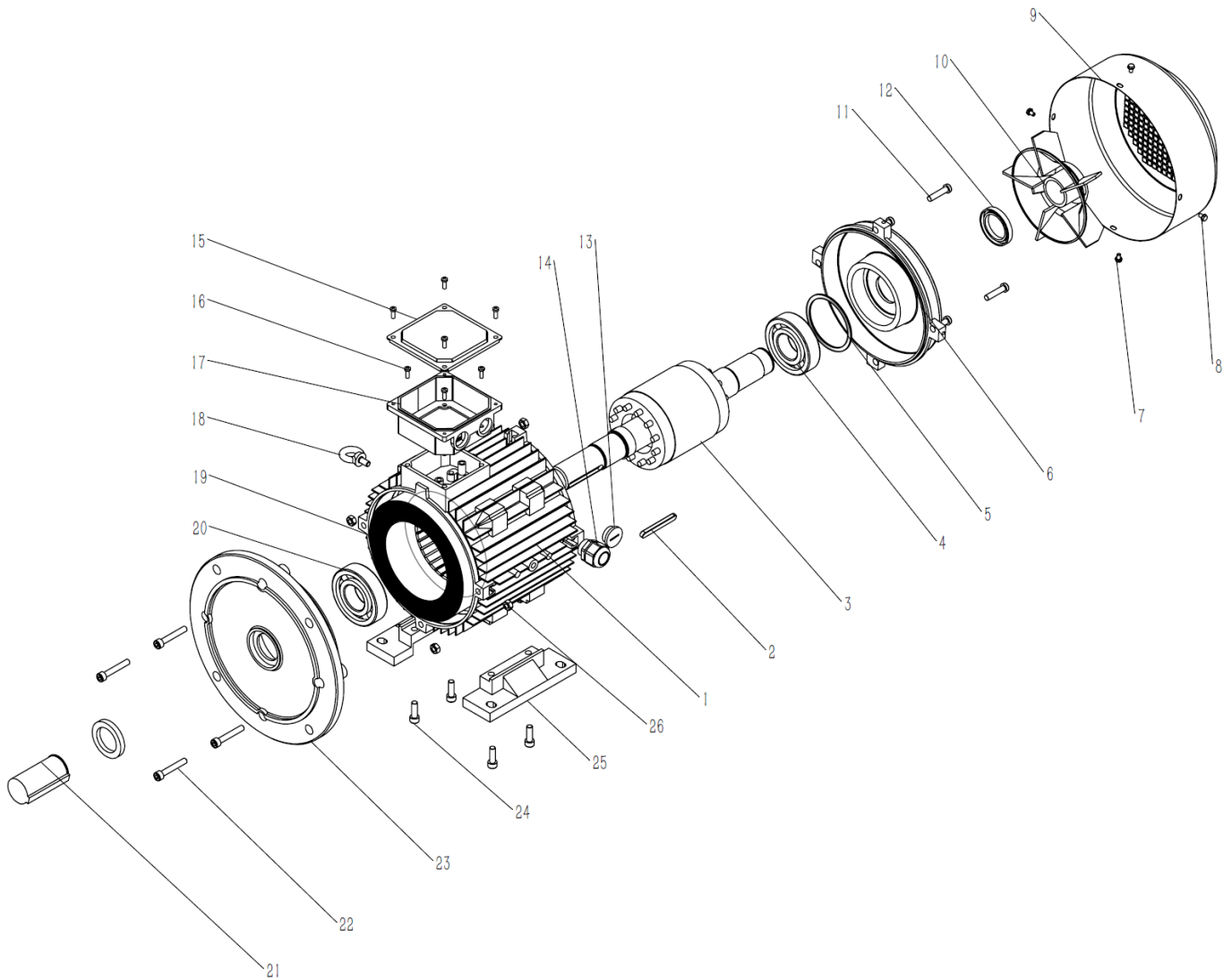


On request, we can obtain the following approvals on your behalf



Model	Frame size	Power (kW)	Voltage (V)	Current (A)	Speed (rpm)	Eff. (%)	Power factor	Tstart/ Tn	Tmax/ Tn	Is/In
YE3-63M2-2	63M	0.25	380-415	0.7	2800	69.7	0.81	2.3	2.2	7.0
YE3-71M1-2	71M	0.37	380-415	1.0	2800	73.8	0.81	2.3	2.2	7.0
YE3-71M2-2	71M	0.55	380-415	1.5	2830	77.8	0.82	2.3	2.3	7.0
YE3-80M1-2	80M	0.75	380-415	1.75	2840	80.7	0.82	2.3	2.3	7.0
YE3-80M2-2	80M	1.1	380-415	2.5	2870	82.7	0.83	2.2	2.3	7.6
YE3-90S-2	90S	1.5	380-415	3.4	2890	84.2	0.84	2.2	2.3	7.9
YE3-90L1-2	90L	2.2	380-415	4.6	2890	85.9	0.85	2.2	2.3	7.9
YE3-90L2-2	90L	2.5	380-415	5.5	2890	86.4	0.85	2.2	2.3	7.9
YE3-100M-2	100M	3	380-415	5.6	2900	87.1	0.87	2.2	2.3	8.5
YE3-100L-2	100L	4.5	380-415	8.6	2900	88.5	0.88	2.0	2.3	8.5
YE3-112M1-2	112M	3.7	380-415	7.3	2930	87.8	0.87	2.2	2.3	8.5
YE3-112M2-2	112M	4	380-415	7.5	2910	88.1	0.88	2.2	2.3	8.5
YE3-112M3-2	112M	5.5	380-416	9.9	2900	89.2	0.88	2.0	2.3	8.5
YE3-112L-2	112L	7.5	380-415	13.7	2905	90.1	0.88	2.0	2.3	8.5
YE3-132S1-2	132S	5.5	380-415	9.95	2920	89.2	0.88	2.0	2.3	8.5
YE3-132S2-2	132S	7.5	380-415	12.8	2930	90.1	0.88	2.0	2.3	8.5
YE3-132M-2	132M	9.2	380-415	16.3	2930	90.7	0.88	2.0	2.3	8.5
YE3-132L1-2	132L	11	380-415	20.9	2930	91.2	0.89	2.0	2.3	8.5
YE3-132L2-2	132L	12	380-415	20.9	2930	91.4	0.89	2.0	2.3	8.5
YE3-132L3-2	132L	15	380-415	26.3	2940	91.9	0.89	2.0	2.3	8.5
YE3-160M1-2	160M	11	380-415	19.8	2960	91.2	0.89	2.0	2.3	8.5
YE3-160M2-2	160M	15	380-415	26.5	2960	91.9	0.89	2.0	2.3	8.5
YE3-160L1-2	160L	18.5	380-415	31.6	2950	92.4	0.89	2.0	2.3	8.5
YE3-160L2-2	160L	22	380-415	39.6	2950	92.7	0.89	2.0	2.3	8.5
YE3-160L3-3	160L	25	380-415	47.4	2950	93.0	0.89	2.0	2.3	8.5

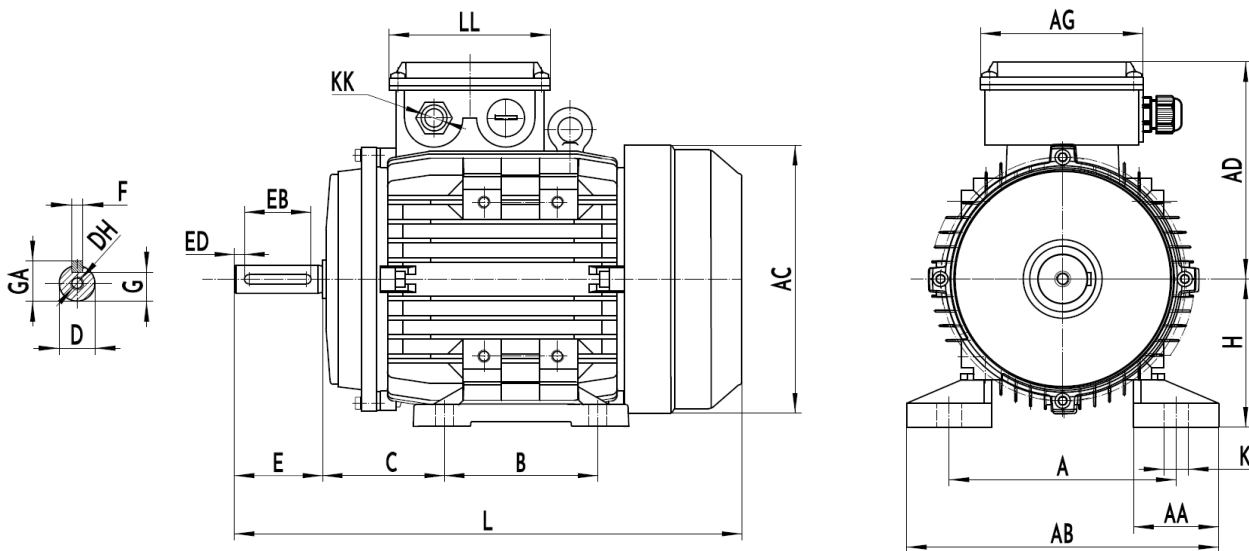
SPARE PARTS



- | | | |
|------------------------------|----------------------------------|------------------------------------|
| 1 Stator frame | 10 Cooling fan | 19 Stator |
| 2 Key | 11 Endshield fixing screw | 20 Drive end bearing |
| 3 Rotor | 12 Skeleton Seal | 21 Shaft protection |
| 4 Non-drive end bearing | 13 Nylon screw in plug | 22 Fixing bolt endshield drive end |
| 5 Washer | 14 Nylon cable fixing head | 23 Flange drive end |
| 6 Non-drive endshield | 15 Junction box cover | 24 Fixing bolt motor feet |
| 7 Fixing bolt fan cover | 16 Cross recessed pan head screw | 25 Motor feet |
| 8 External teeth lock washer | 17 Terminal box | 26 Hexagon nut |
| 9 Fan cover | 18 Eyebolt | |

DIMENSIONS

IM B3 H71-160

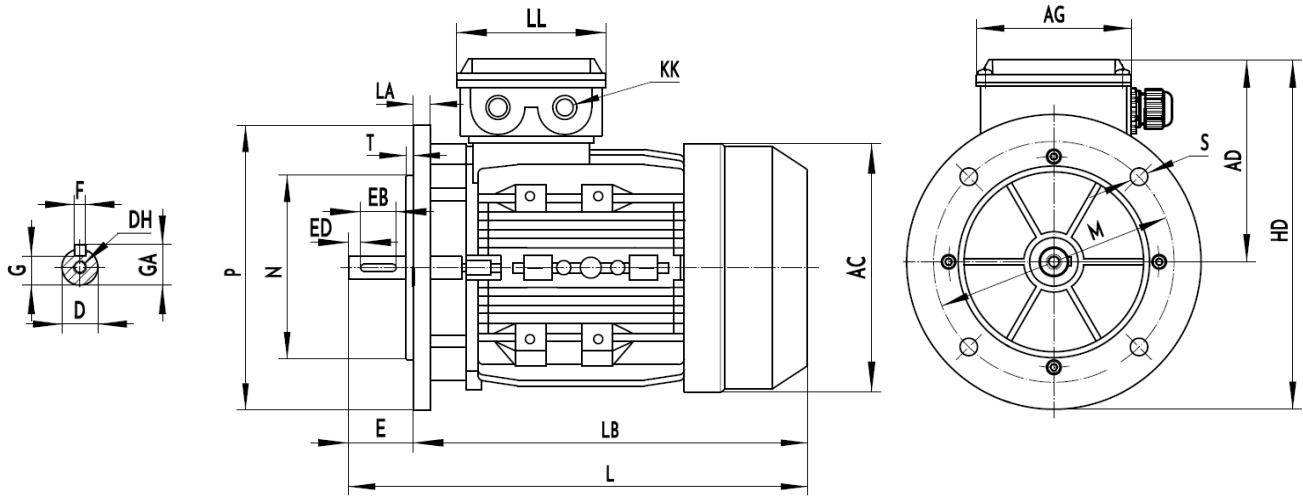


Frame size	D	DH	F	G	GA	AC	B	C	E	ED
71	14	M5×14	5	11	16	138	90	35	30	5
80	19	M6×23	6	15.5	21.5	160	100	50	40	5
90S	24	M8×19	8	20	27	178	100	56	50	5
90L	24	M8×23	8	20	27	178	125	56	50	3
100L	28	M10×35	8	24	31	198	140	63	60	5
112M	28	M10×35	8	24	31	220	140	70	60	4
132S	38	M12×35	10	33	41	261	140	89	80	4
132M	38	M12×35	10	33	41	261	178	89	80	4
160M	42	M12×35	12	37	45	317	210	108	110	8
160L	42	M12×35	12	37	45	317	254	108	110	8

Frame size	L	LL	KK	A	AA	AB	AD	AG	H	K
71	230	81	1-M16×1.5	112	40	150	105	81	71	8×12
80	300	106	1-M20×1.5	125	35	160	130	106	80	10×14
90S	306	106	1-M20×1.5	140	35	175	137	106	90	10×12
90L	330	106	1-M20×1.5	140	35	175	137	106	90	10×13
100L	406	106	1-M20×1.5	160	49	209	145	106	100	12×16
112M	410	119	1-M25×1.5	190	55	245	160	119	112	14×16
132S	443	119	1-M25×1.5	216	56.5	272.5	194	119	132	12×16
132M	507	119	1-M25×1.5	216	56.5	272.5	194	119	132	12×16
160M	615	149	2-M32×1.5	254	78	332	240	160	160	15×18
160L	660	149	2-M32×1.5	254	78	332	240	160	160	15×18

DIMENSIONS

IM B5 H80-160

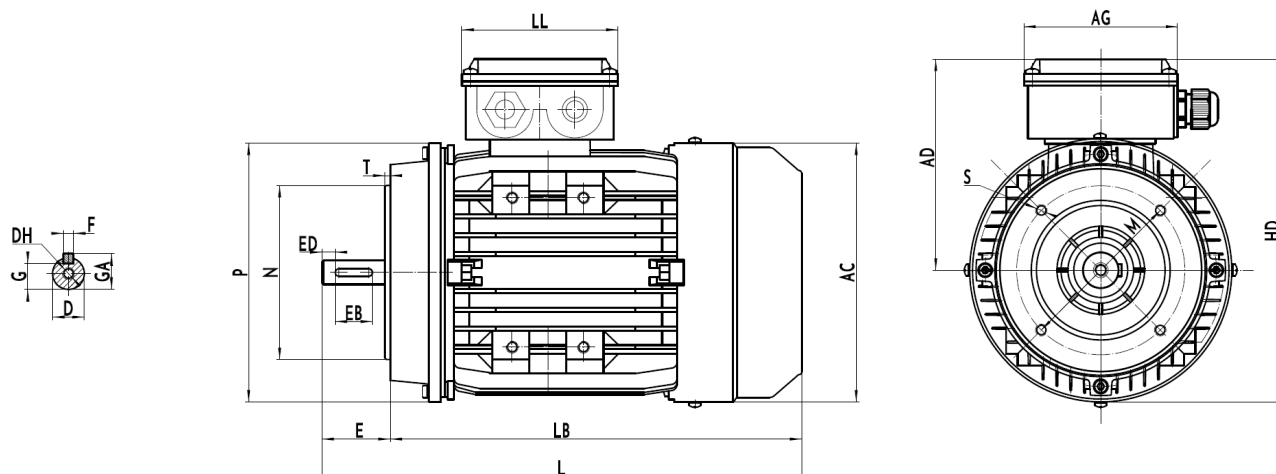


Frame size	D	DH	F	G	GA	AC	E	EB	ED	KK	L
80	19	M6x23	6	15.5	21.5	160	40	30	5	1-M20x1.5	6
90S	24	M8x19	8	20	27	178	50	40	5	1-M20x1.5	8
90L	24	M8x23	8	20	27	178	50	40	3	1-M20x1.5	8
100L	28	M10x35	8	24	31	198	60	50	5	1-M20x1.5	8
112M	28	M10x35	8	24	31	220	60	50	4	1-M25x1.5	8
132S	38	M12x35	10	33	41	261	80	70	4	1-M25x1.5	10
132M	38	M12x35	10	33	41	261	80	70	4	1-M25x1.5	10
160M	42	M12x35	12	37	45	317	110	90	8	2-M32x1.5	12
160L	42	M12x35	12	37	45	317	110	90	8	2-M32x1.5	12

Frame size	LA	LB	LL	M	N	P	T	AD	AG	HD	S
80	10	252	106	165	130	200	3.5	130	106	230	12
90S	12	255	106	165	130	200	3.5	137	106	255	12
90L	12	280	106	165	130	200	3.5	137	106	280	12
100L	14	327	106	215	180	250	3.5	145	106	327	15
112M	14	345	119	215	180	250	4	160	119	345	15
132S	15	363	119	265	230	300	4	194	119	363	15
132M	15	400	119	265	230	300	4	194	119	400	15
160M	16	505	149	300	250	350	5	240	160	505	18
160L	16	550	149	300	250	350	5	240	160	550	18

DIMENSIONS

IM B14 H63-132

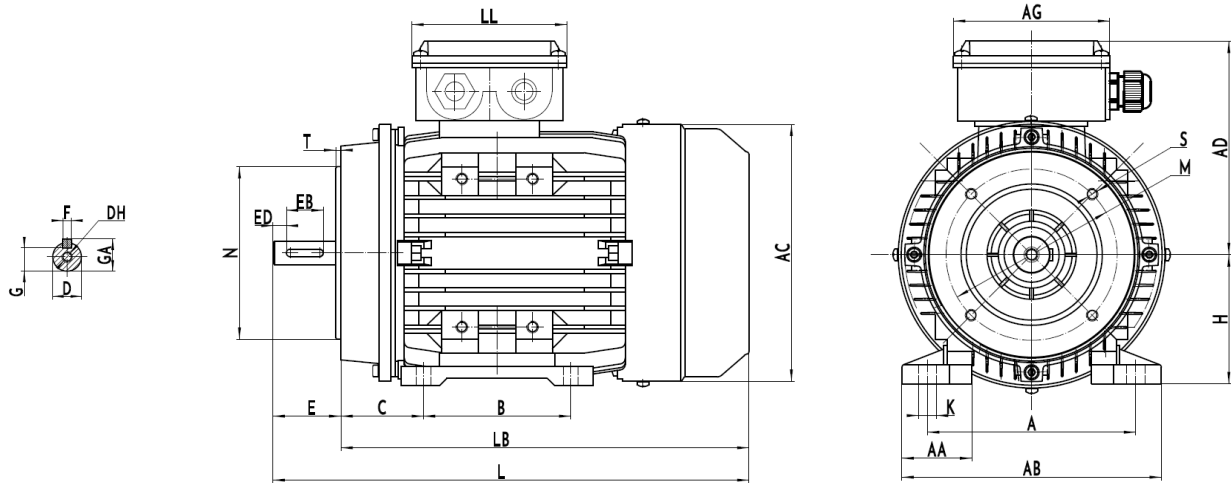


Frame size	D	DH	F	G	GA	AC	E	EB	ED	L
63	11	M4x13	4	8.5	12.5	120	23	16	3	4
71	14	M5x12	5	11	16	138	30	20	5	5
80	19	M6x23	6	15.5	21.5	160	40	30	5	300
90S	24	M8x19	8	20	27	178	50	40	5	306
90L	24	M8x23	8	20	27	178	50	40	3	330
100L	28	M10x35	8	24	31	198	60	50	5	400
112M	28	M10x35	8	24	31	220	60	50	4	410
132S	38	M12x35	10	33	41	261	80	70	4	469
132M	38	M12x35	10	33	41	261	80	70	4	507

Frame size	LB	LL	M	N	P	T	AD	AG	HD	S
63	200	94	75	60	117	3	81.5	94	140	M5
71	190	94	85	70	131	3	105	94	170.5	M6
80	260	106	100	80	153	3	130	106	206.5	M6
90S	256	106	115	95	170	3	137	106	222	M8
90L	280	106	115	95	170	3	137	106	222	M8
100L	340	106	130	110	190	3.5	145	106	240	M8
112M	350	119	130	110	217.5	3.5	160	119	268.75	M8
132S	389	119	165	130	256	4	194	119	322	M10
132M	427	119	165	130	256	4	194	119	322	M10

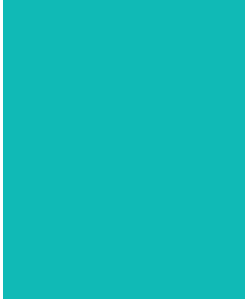
DIMENSIONS

IM B34 H71-132



Frame size	D	DH	F	G	GA	AC	B	C	E	EB	ED	L
71	14	M5X14	5	11	16	138	90	35	30	20	5	190
80	19	M6x23	6	15.5	21.5	160	100	50	40	30	5	300
90S	24	M8x19	8	20	27	178	100	56	50	40	5	306
90L	24	M8x23	8	20	27	178	125	56	50	40	3	330
100L	28	M10x35	8	24	31	198	140	63	60	50	5	400
112M	28	M10x35	8	24	31	220	140	70	60	50	4	410
132S	38	M12x35	10	33	41	261	140	89	80	70	4	469
132M	38	M12x35	10	33	41	261	178	89	80	70	4	507

Frame size	LB	LL	N	T	A	AA	AB	AD	AG	H	K	M	S
71	190	94	70	3	112	40	150	105	94	71	8x12	85	M6
80	300	106	80	3	125	35	160	130	106	80	10x14	100	M6
90S	306	106	95	3	140	35	175	137	106	90	10x12	115	M8
90L	330	106	95	3	140	35	175	137	106	90	10x13	115	M8
100L	400	106	110	3.5	160	49	209	145	106	100	12x16	130	M8
112M	410	119	110	3.5	190	55	245	160	119	112	14x16	130	M8
132S	469	119	130	4	216	56.5	272.5	194	119	132	12x16	165	M10
132M	507	119	130	4	216	56.5	272.5	194	119	132	12x16	165	M10



IMPORTANT NOTES

A series of horizontal dashed lines spanning the width of the page, intended for writing notes.



REMT

Address:
168 Fuyuan Road,
Dongqian Zone, Nanxun
District, Huzhou City,
Zhejiang Province, China

Phone:
+86(0)572 357 8896

Email:
sales@runnermotor.cn



www.runnermotors.cn